

Step In Dirt-trapping mats



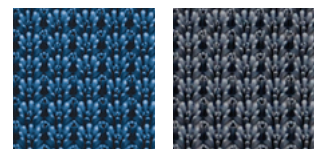
Properties



Specifications

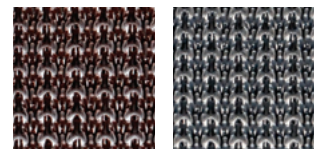
Sizes: 57 x 86 cm
Thickness: 17 mm
Weight: 1.3 kg/pc
Material: Polyethylene (LDPE)

Colors:



metallicblue

anthracite



brown

grey

Applications

Step In is suitable for indoor and outdoor use in all areas with heavy pedestrian traffic.

The benefits at a glance

- Made from recycling Polyethylene (LDPE)
- Optimum absorption of water, dirt and moisture
- Effective drain-through and aeration
- Extremely hard-wearing
- Temperature-resistant from -40°C up to +55°C
- Color- and light-fast
- Modular system

Instructions for use and cleaning

- For easy cleaning just shake it or hose it down
- Flexible modular-system to suit all places

