

## Tough on dirt, gentle to your interior.

Everyone agrees: dust, sand, mud and other dirt should stay outside. So should everybody leave their shoes at the door?

Verimpex has the perfect solution for you. A ruthless scraping mat, the Brossguard®. A mat for indoor and outdoor use, especially designed for heavy traffic entrance areas (public buildings, schools, office buildings, shopping centres, ...).

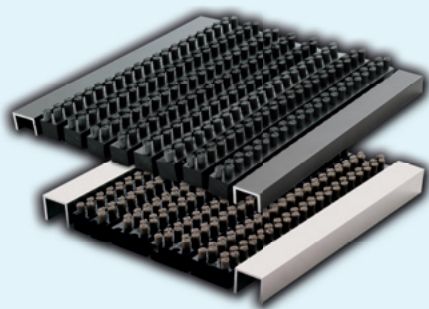
### CHARACTERISTICS



### COMPOSITION

The Brossguard® is composed of durable nylon brushes, securely imbedded in PVC bars separated by spacing caps. Stainless steel wires hold the PVC bars and the plastic caps in place. Thanks to the structure of the mat the dirt that is scraped from shoe soles can be easily removed. Other versions of this mat are also available, such as the Brossguard® with scraping profiles and double brushes.

### CONSTRUCTION



#### > single



#### > double



- The Brossguard® is available in single and double construction.
- Brossguard® single and double construction, available with different spacing cap lengths (4 mm or 8 mm).

### COLOURS

Brushes >



grey   brown   red   black   blue   green   terracotta   coco   anthracite

PVC profile >



grey   anthracite


### PERSONALISATION

A mat is a perfect tool to familiarise your staff or customers with the image, the logo or the slogan of your company. For the mat is the first thing a customer sees when entering your shop or business. An entrance mat is no longer just a "cleaner", it has also become a visiting card. Furthermore, with a personal logo incorporated in the mat, it is less likely to be stolen.



## TECHNICAL DATA

### properties of the materials

	Brossguard®
Shape	
Height	23 mm
PVC profiles	rigid PVC, 15 mm x 15 mm recycled material
Aluminium end profile	20 mm wide x 15 mm high

### brushes



Brushes made of nylon 6,6: UV-stabilised.  
 Density of the brushes: 950.000 rigid nylon bristles / m<sup>2</sup> (4 mm).  
 > Number of bristles per brush: 110 pcs.  
 Height of the brush: 8 mm.

### steel wire

Diameter	2 mm minimally.
Steel wire	stainless steel, type 316. The distance between the wires is approximately 300 mm.
Spacing caps	Round spacing caps made of soft PVC, colour anthracite (diameter: 10 mm); length 4 mm or 8 mm.
Clamps	Galvanised steel wire 0,8 mm.
Nipples	8x9 SCH GR72510-08.

### approximate total weight (in kg/ m<sup>2</sup>)

	Brossguard®
4 mm	18 kg
8 mm	16 kg
with scraping profile	19 kg

## TESTS



All tests were carried out by the University of Ghent, textile department. A copy of the official test results is available upon request. Samples of materials subjected to the stringent wear test (Wronz test) are available for inspection at Verimpex, Brugge.

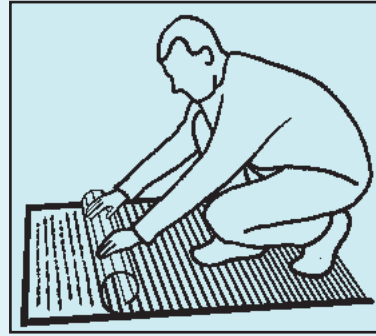
Allgemein					
Fire	pr EN ISO 11925-2 pr EN ISO 9239-1	Class B			
Smoke	Classification according to Pe EN 13501-1 (2000)	S 1			
Colourfastness	ISO 105 B02 (1994)	Class 7-8 *			
Wronz	Value 25.000				
Moisture absorption	Report 02-785 A	Extra weight compared to dry state	wet	after 1 hour	after 24 hours
		Brossguard® single	1135,18 gr/m <sup>2</sup>	1089,44 gr/m <sup>2</sup>	441,18 gr/m <sup>2</sup>

\* Class 8 is the best result.

## EXECUTION

### installation

height	installation	well depth
23-25 mm	in a matwell	25 mm



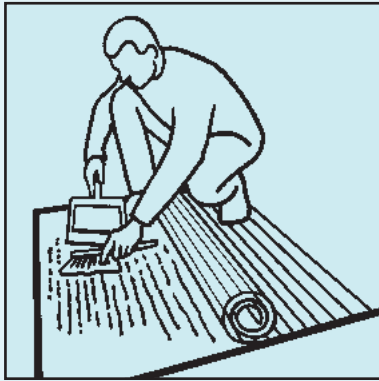
### production

The mat is made to size in the factory. In principle, it is made in one piece, but in case of larger surfaces, it is advisable to divide this mat in several sections. When making the mat, the dimensions of the sections are determined by the weight of each section. The layout and the arrangement of the different sections are determined in consultation with the manufacturer. In case of broad surfaces, the sections are placed next to one another and separated by a reversed T-shaped profile. The width of the mats is determined on the basis of aesthetic considerations and required functionality.

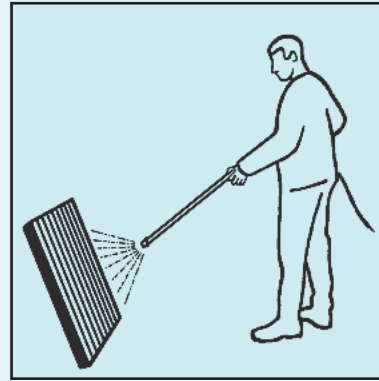


## MAINTENANCE INSTRUCTIONS

Regular maintenance	<ul style="list-style-type: none"><li>• Remove the dirt from the matwell using a brush or a vacuum cleaner after having rolled up the mat.</li><li>• Remove the dry dirt remaining on the mat by vacuuming in the direction of the profiles (not perpendicular to the direction of the profiles).</li></ul>
Periodic maintenance	<ul style="list-style-type: none"><li>• Roll up the mat and remove the dirt accumulated under the mat with a vacuum cleaner or with a dustpan and brush.</li><li>• Coarse, sticky or wet dirt remaining on the mat is removed using a hard scrubbing brush in combination with water and a universal detergent.</li></ul>
Thorough maintenance	<ul style="list-style-type: none"><li>• The mat is removed from the matwell for thorough cleaning.</li><li>• Vacuum the matwell and clean with water.</li><li>• Clean the mat with a high-pressure cleaner or with a hard scrubbing brush, in combination with water and a universal detergent.</li></ul>



Remove the dirt from under the mat using a dustpan and brush or a vacuum cleaner.

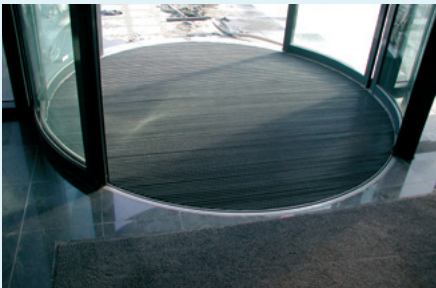


Clean the mat with a high-pressure cleaner, a garden hose or a hard scrubbing brush in combination with water and a universal detergent.

## WARRANTY

10 years warranty for structural defects in case of normal use is offered in accordance with the warranty conditions.

## REFERENCES



> Fortis - Brüssel



> Euroscop - Maasmechelen

> Kinopolis - Brüssel

